



COMPLIANCE WHEEL STOP

At last, a **Green Alternative** to rubber, concrete and steel wheel stops!

Introducing our Compliance one-piece wheel stop.

Designed to comply with AS2890.1:2004 and manufactured from high-tech Linear Low Density Polyethylene (LLDPE) with sustainability in mind.

The Compliance one-piece wheel stop is packed with features never seen before in a wheel stop, anywhere in the world.

It will not fade, rot, rust or crack and it comes complete with fixings and blanking plugs.

Also, weighing only 4.5kgs each they are a dream to install.

Compliance is available in 3 standard U.V. stabilised colours. Safety Yellow for increased visibility and pedestrian safety, Blue for highlighting disabled parking spaces and Concrete Grey.



66
SECTION
06

THREE STANDARD, U.V. STABILISED COLOURS TO CHOOSE FROM



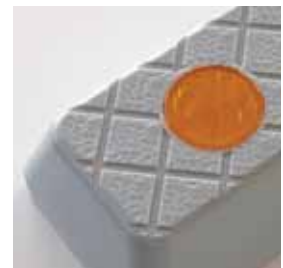
Blue model highlights disabled parking spaces.

DISABLED BLUE



Four blanking caps (included) provide a flush finish while concealing fixings.

SAFETY YELLOW



Optional hi-vis reflector caps available.

CONCRETE GREY

Value features:

- » Designed and manufactured to AS2890.1:2004.
- » Manufactured from environmentally friendly LLDPE.
- » Solid colour and U.V. stabilised.
- » Extremely tough structure with retained flexibility.
- » Lightweight, only 4.5kgs for one person installation.
- » Much longer life than rubber or concrete alternatives.
- » Four high-strength fixing points with blanking caps.
- » Available in three colours – Yellow, Blue and Grey.
- » Three standard fixing systems available.
- » Moulded-in sign recess for personal identification.
- » Absolutely unique, world-first design.
- » Optional reflector plugs available.
- » Comes complete with fixings and blanking plugs.

Specifications:

Description:	Compliance one-piece wheel stop.
Material:	Injection moulded Linear Low Density Polyethylene (LLDPE).
Finish:	Solid colour, in Yellow, Blue or Grey.
Length:	1700mm to AS2890.1:2004.
Width:	160mm at the base.
Height:	100mm to AS2890.1:2004.
Weight:	Approx. 4.5kgs each.
No. of fixings:	Four (selected from the table below).

PART No.	DESCRIPTION
CWS1700Y	One piece Compliance wheel stop – Safety Yellow for improved pedestrian safety (fixings supplied).
CWS1700B	One piece Compliance wheel stop – Disabled Blue for disabled parking spaces (fixings supplied).
CWS1700G	One piece Compliance wheel stop – Concrete Grey (fixings supplied).
BMR	Optional reflector plugs (each)

FIXINGS	DESCRIPTION
KIT17	Use for fixing into good quality asphalt or bitumen. Comprises four each of M10 x 100mm coach bolt, 44mm heavy washers and high performance masonry anchors.
KIT18	Use in conventional reinforced concrete. Drill depth 85mm. Comprises four each of M10 x 75mm concrete screw anchors and 44mm heavy washers.
KIT19	Use for shallow drilling into concrete. Drill depth 43mm. Comprises four each of M10 x 40mm drop-in anchors, 44mm heavy washers and M10 x 25mm set screws.

Combining value, durability and environmental sustainability with clean and safe handling!

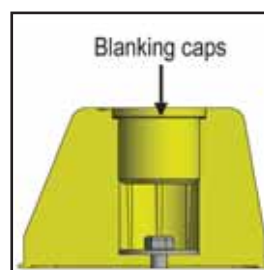


4.5
KILOGRAMS
EASILY HANDLED
BY ONE PERSON

By comparison, rubber wheel stops typically weigh around 16kgs and concrete up to 100kgs.



Choose from three different fixing systems.



Deeply recessed mounting points provide maximum hold-down.



Internal structure combines incredible strength and flexibility.



PLACEMENT OF WHEEL STOPS ACCORDING TO AS2890.1:2004



Front into a low kerb.



Rear into a low kerb.



Front into a high kerb or wall.



Rear into a high kerb or wall.

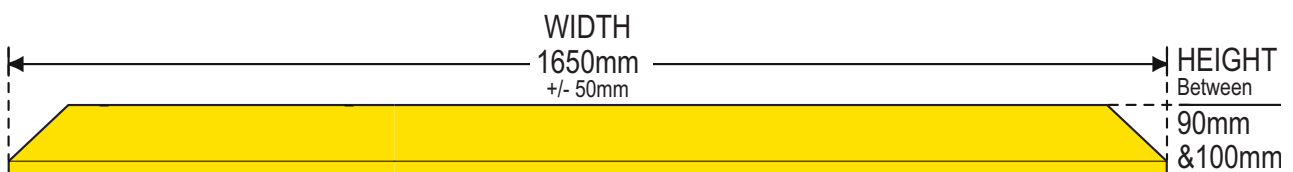
Wheel stops may be provided where it is considered necessary to limit the travel of a vehicle into a parking space.

Typical uses of wheel stops include:

- Controlling the kerb overhang where inconvenient or hazardous to pedestrians.
- Inhibiting contact with an end barrier or high kerb.
- Inhibiting encroachment into an opposing parking space. Wheel stops should be avoided in any situations where they may be in the path of pedestrians moving to or from parked vehicles, or crossing a car park for any other purpose.

Wheel stops shall be between 90 and 100mm in height, and 1650 ± 50mm in width.

1. Wheel stop distances shown are for 100mm high wheel stops and measured from the front of the parking space to the point of contact with the vehicle tyre.
2. If wheel stops are provided to restrain vehicle contact with a kerb higher than 150mm or a wall, a further 200mm shall be added to the wheel stop distance.
3. **The maximum height of wheel stops under AS2890.1:2004 is 100mm. Most concrete wheel stops do not comply with the standard as they exceed the maximum height.**



Minimum and maximum wheel stop dimensions to comply with AS2890.1:2004.

LEGEND



PROPRIETARY DESIGN

This product has been fully designed and developed by Barrier Group. It is a proprietary product of Barrier Group Pty. Ltd. and protected by copyright.



FREE END OF LIFE RECYCLING

Return this product to Barrier Group for free recycling rather than dumping into landfill.



NEW AND UNIQUE

This is a new and unique product. It has either been designed, developed and manufactured by the Barrier Group Pty. Ltd. or it is being seen here for the first time.



100% RECYCLABLE

This product is manufactured from virgin grade raw materials and is 100% recyclable using existing, readily available recycling technology and services.



RECYCLED MATERIALS

This product has been manufactured from either a combination of recycled materials and virgin grade materials or entirely from recycled materials.



HOT DIP GALVANISED

This product has been hot dip galvanised prior to any surface coatings being applied. Hot dip galvanised offers vastly improved corrosion protection and extended life in harsh environments.



FIXINGS INCLUDED

This product comes complete with all the necessary fixings to complete the standard installation. When comparing competitors prices against our own, always ensure they have included the fixings with the product (excludes gravel spikes).

WARNING

© Barrier Group Pty. Ltd. takes the protection of its intellectual property (IP) seriously and will not hesitate to pursue legal action against any individual, group or organization attempting to steal, copy or duplicate any of its proprietary designs OR anyone who imports, sells or distributes illegal copies or duplicates of its proprietary designs.

IT'S AGAINST THE LAW – AVOID THE PAIN!