

SLO-MOTION COMPLIANCE

Introducing our 'Slo-motion Compliance' speed hump. Compliance is a modular speed control system consisting of independent modules each 250mm long with rounded end caps. Compliance is manufactured from a high tech 'Linear Low Density Polyethylene' (LLDPE) with solid colour. It will not fade, rot, rust or crack and has built-in prismatic reflectors for enhanced night visibility. Suitable for car parks, schools, shopping centres, factory complexes or anywhere it is desired to control the speed of vehicles.

Finally an Australian company...

has designed, developed and manufactured in Australia a modular composite speed hump to comply with Australian Standards AS2890.1:2004 for local conditions. Compliance carries a five year guarantee against structural failure due to U.V. degradation.

Slo-motion Compliance is as tough as the Aussie Outback.

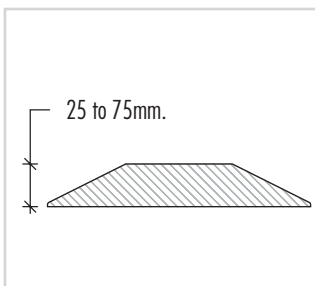
What is LLDPE? See Section 9.1.1.



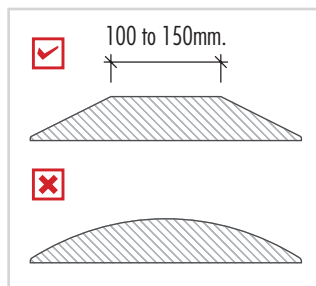
PLEASE NOTE

The Australian Standard which regulates the design and use of speed humps for use in off-street parking in Australia is 'AS2890.1:2004 parking facilities'. AS2890.1 identifies four main criteria in the design of "type 2" speed humps: height, cross section, ramp angle and markings.

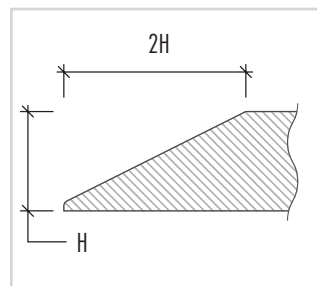
Until now very few "type 2" speed humps sold in Australia met these four criteria. Of the non-metal type, most if not all are manufactured overseas from cheap, very poor quality reclaimed materials of variable origin which quickly breakdown, fade or fail under Australian conditions.



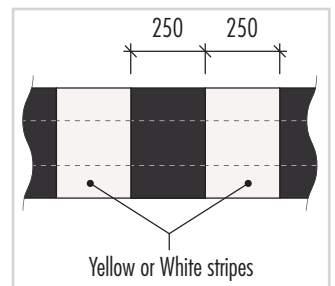
Height:
Must be between 25 & 75mm.



Cross Section:
Must be flat on top.
Not round or peaked.



Ramp Angle:
Must have a ramp angle 2:1.



Markings:
Must have alternating parallel yellow or white stripes 250mm wide.

SLO-MOTION COMPLIANCE

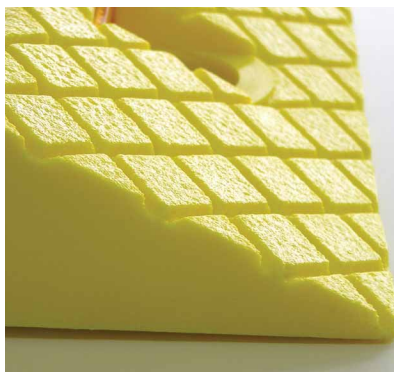
Value Features:

- » Manufactured in Australia to comply with AS2890.1:2004.
- » Solid colour. UV Stabilised, high tech composite plastic construction.
- » Supplied with fixings ready for installation.
- » Built-in prismatic reflectors for improved night visibility.
- » Slip resistant texture moulded into surface.
- » Built-in cable channel 27 x 30mm.
- » Strengthened mounting points with large diameter load sharing washers.
- » Low noise design suitable for residential areas.
- » Excellent outdoor weathering characteristics
- » **5 Year Structural guarantee***.
- » Light weight with incredible strength.

Specifications:

Description:	Slo-motion Compliance speed control system.
Material:	Injection moulded Linear Low Density Polyethylene (LLDPE).
Finish:	Solid colour (Black or Yellow).
Length:	Body modules – 250mm. End modules – 180mm Radius.
Width:	360mm (In the driving direction).
Height:	60mm.
Ramp Angle:	2:1.
Weight:	Body modules – 1.8kg. End modules – 0.8kg.
No. of fixings:	2 per module (supplied).

PART No.	DESCRIPTION
SMC250Y	250mm body module – Yellow
SMC250B	250mm body module – Black
SMC250E	180mm radius end module – Black (pair)



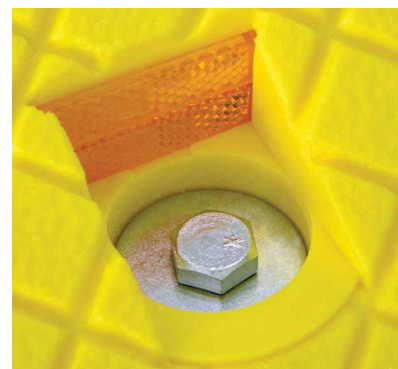
Textured slip resistant surface moulded in.



High tech composite plastics with solid colour.



Designed, developed and manufactured in Australia for local conditions.



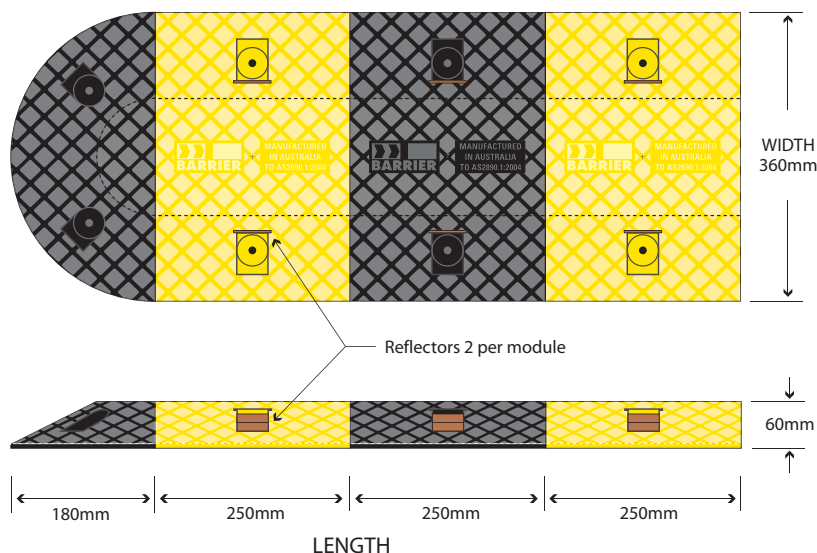
Built-in reflectors and large load sharing mounting points.



Light weight construction with strength and durability engineered in.



Simple installation with all fixings supplied.



*** 5 YEAR GUARANTEE AGAINST STRUCTURAL FAILURE DUE TO U.V. DEGRADATION**

